



**AL GHURAIR  
COLLECTION**  
WEDYAN - THE CANAL



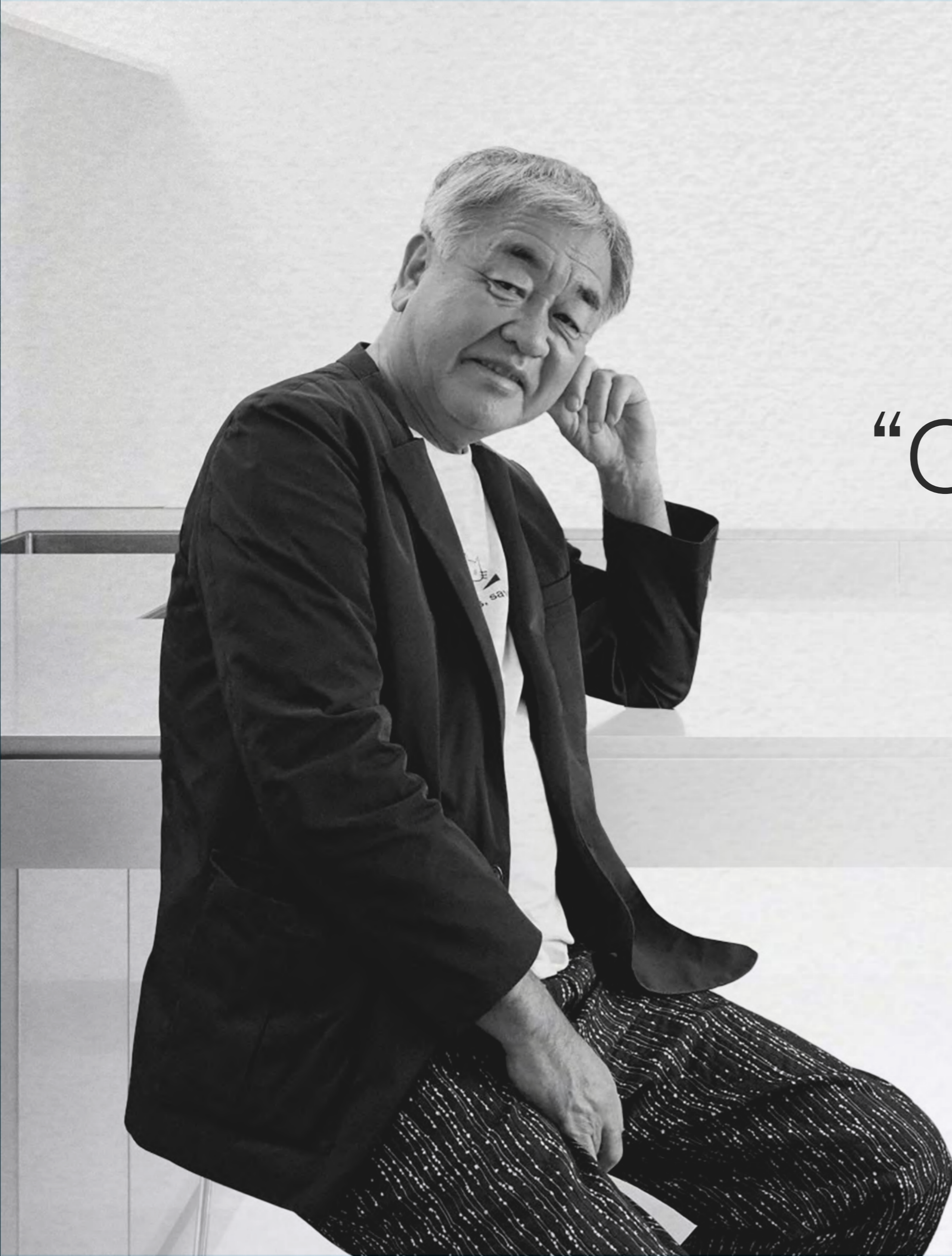
# A New Chapter For Al Ghurair

The Al Ghurair name has shaped Dubai's story for generations. With Al Ghurair Collection, we begin a new chapter - bringing artistry and purpose together to build the world's most collectible addresses.

As a next generation developer, we are drawn to originality over convention. We build places that refuse to follow the familiar. These are one-of-a-kind architectural statements, destined to become future landmarks. Longevity is our measure of value - timelessness, not trends, defines the Collection.

Every line, every corner, every detail is shaped in collaboration with award-winning, world-renowned architects, interior designers, and conceptual creatives - uniting world-class minds to make each space unmistakably its own.





“Create quietness  
in the noise.”

Kengo Kuma,  
Architect

“Our design philosophy is harmonising and merging with nature to create a natural flow between architecture, people and the environment. With Wedyan, our purpose is to create nature within the city and bring softness through its design. It is a contrast from normal skyscrapers.”

#### **KENGO KUMA & ASSOCIATES**

Founded in 1990, Kengo Kuma & Associates projects are underway in more than 50 countries, featuring architecture that opens new relationships between nature, technology, and humans.

# World class landscaping designed by Gustafson Porter + Bowman



Our landscapes are designed in collaboration with Gustafson Porter + Bowman, the award-winning, London based practice behind some of the most celebrated public spaces in the world. Their philosophy of weaving together nature, culture, and human experiences ensures that every outdoor space within Wedyan is not only beautiful, but enduring, sustainable and enriching.

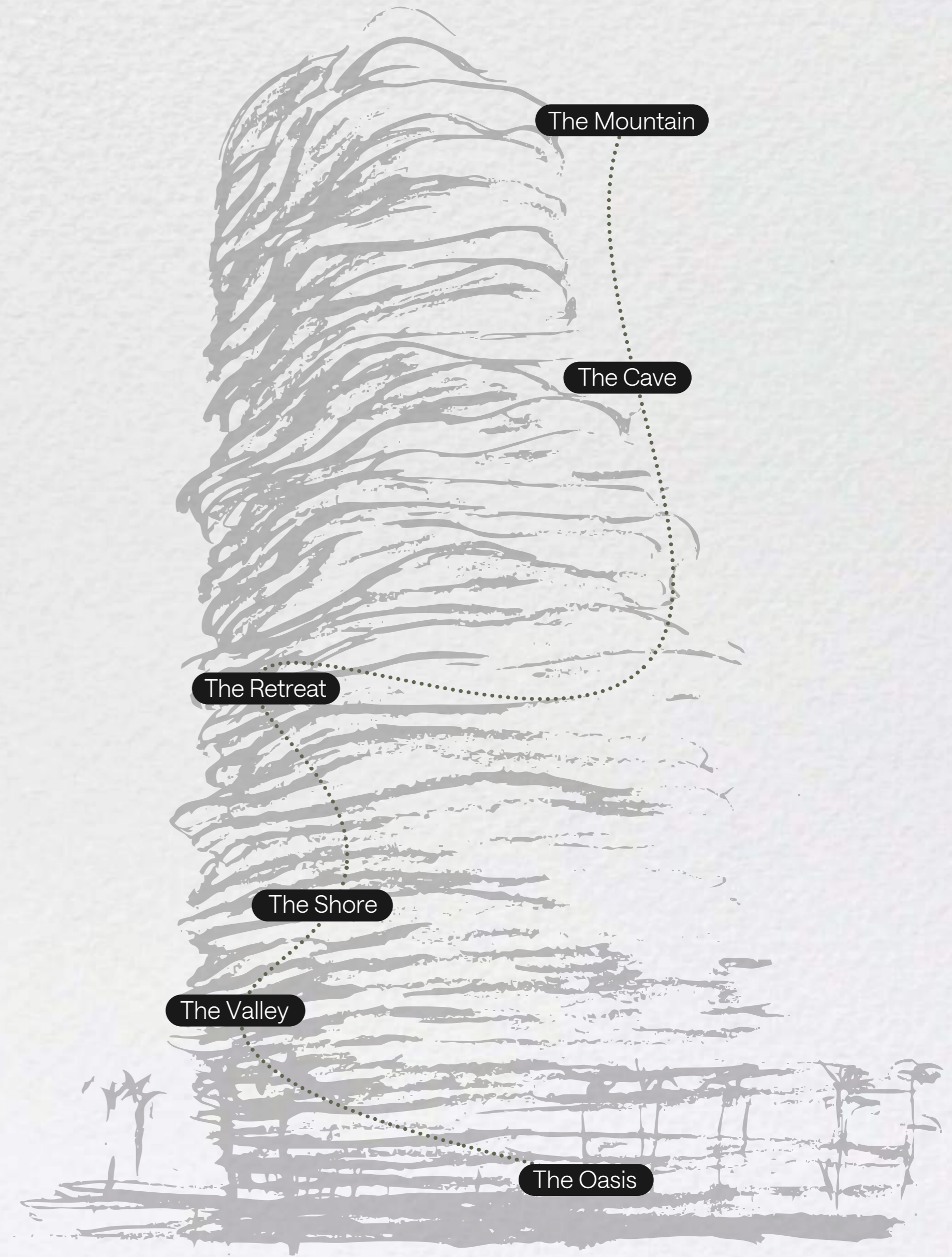


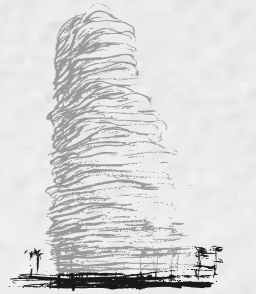
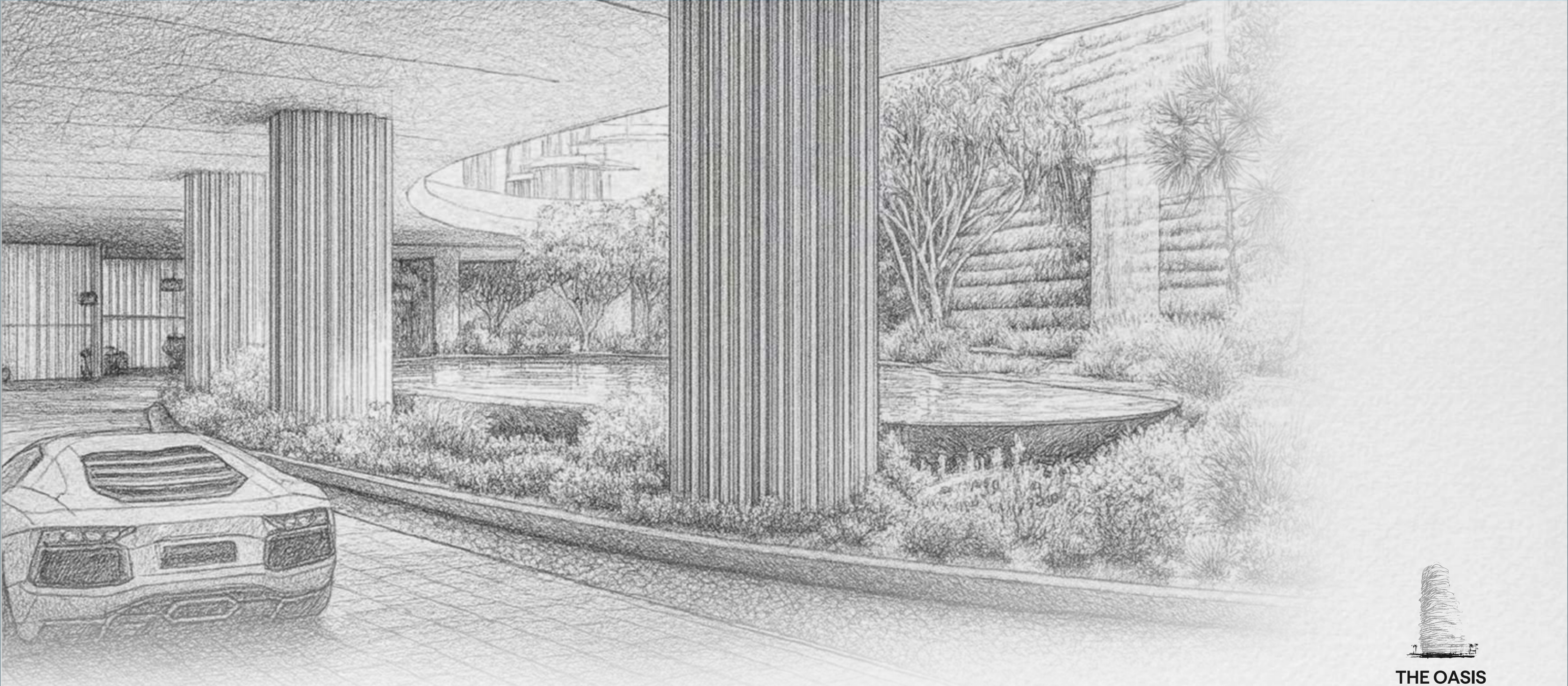
# Boldly unexpected, awe-inspiring by design

Rising gracefully along the water's edge, Wedyan is an organic retreat in the heart of Dubai. Inspired by the raw beauty of Middle Eastern valleys, rugged mountains, and sweeping desert dunes, the tower embodies the region's natural landscape.

Wedyan marks award-winning architect Kengo Kuma's first masterpiece in Dubai - a tower defined by fluid contours inspired by dunes carved by the wind. Its distinctive silhouette commands attention, a celebration of the city while honouring the enduring patterns of nature that surround it.

# The Journey



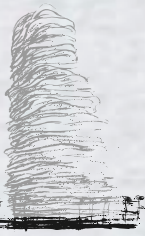


THE OASIS

Breathe In. You're Home.



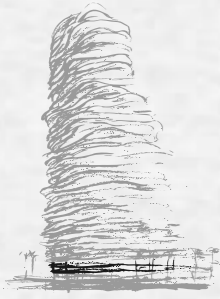
At Wedyan, life's finest  
comforts welcome you home.



# A Car Collector's Paradise

Your arrival begins with your drive home. At Wedyan, a stunning oasis-inspired path makes way to a striking car stacker in a temperature and humidity-controlled environment, designed to preserve your luxury, classic or super car collection.





THE VALLEY

# Where Motion Meets Purpose





A place for focused  
movement, built to support  
your active lifestyle.

# A World Of Energy

A purpose-built space for performance, The Valley on Level 2 brings together state-of-the-art facilities - from a cardio and strength zone to a reformer pilates and yoga space, a padel court, and a dedicated spin studio - creating an environment that nurtures balance, vitality, and everyday progress.





THE SHORE

# Where Each Day Finds Its Spark



Here, connections flourish,  
stories come alive,  
and memories take shape.

# A playground of life, made for all

An entire floor for all ages, where family and fun come together. The Shore on Level 3 of Wedyan offers a full spectrum of entertainment - whether it's a golf simulator, games room, swimming pools, private cinema, or dining lounges - everything you need for unforgettable moments is at your doorstep.





THE RETREAT

# Where Your World Awaits





This is Wedyan –  
where architecture breathes,  
nature lives within,  
and home is an elevated  
retreat above the city.



THE RETREAT



# Designed Not Just To Be Seen... But To Be Felt

With layouts that flow effortlessly, expansive terraces dissolve the boundaries between indoor and outdoor living. Whether in a three bedroom residence or the grand sky villa, every home is designed for balance, privacy, and tranquillity.



THE RETREAT



# Show Kitchens

Every residence at Wedyan features two kitchens, a service kitchen with a separate access for your private chef and a show kitchen for family time and entertaining guests.



# Primary Suite

The Primary Suite is designed as a calm interplay of light and shadow - a signature of Kengo Kuma's vision. Morning sun filters softly through the space, opening to private terraces and city views while maintaining complete privacy.

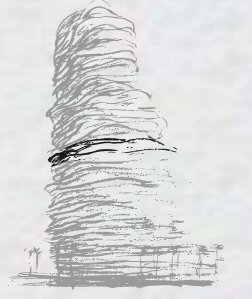
The layout blends indoor and outdoor living, creating a seamless transition between rest, reflection, and the rhythm of daily life.





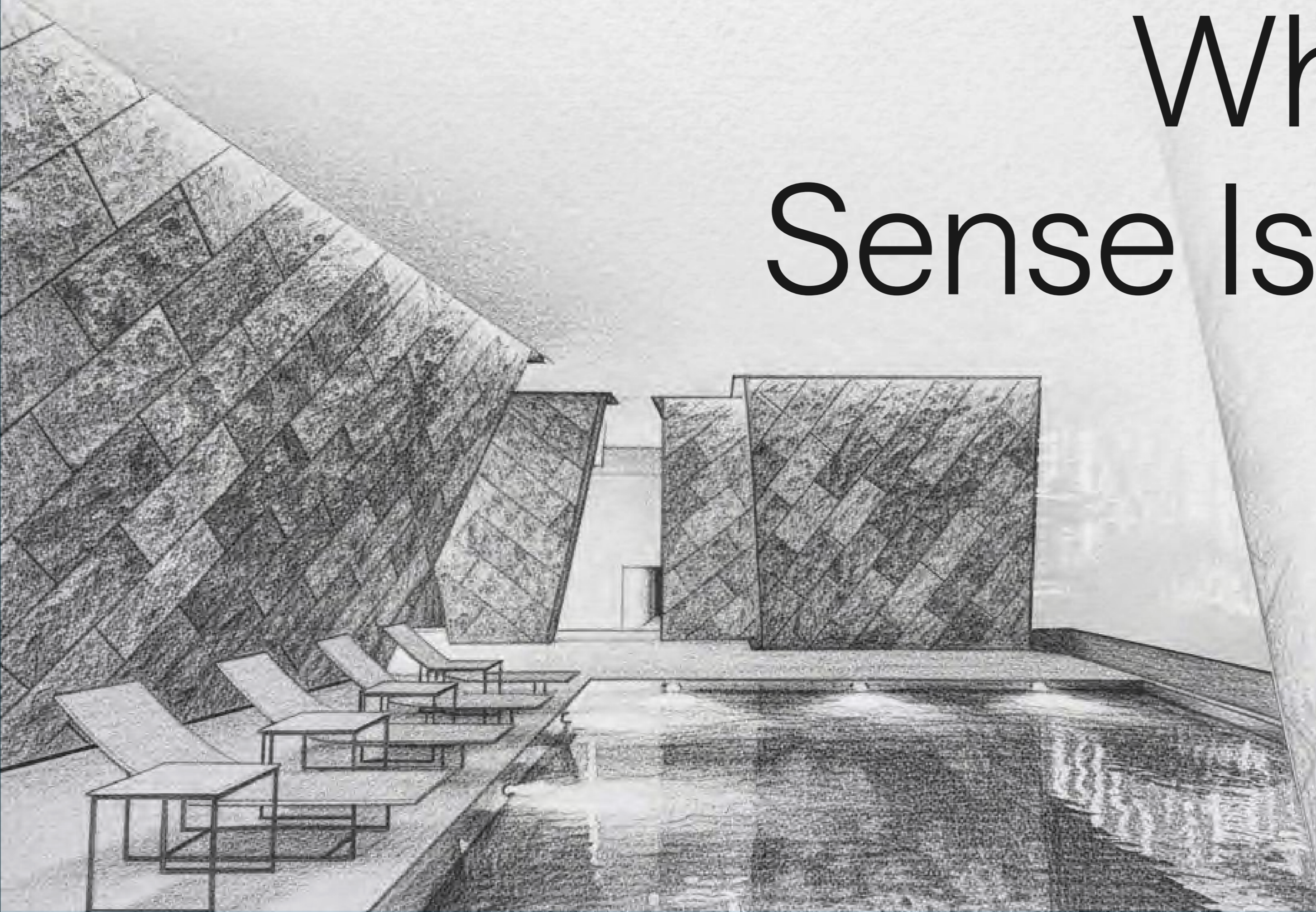
# Signature Pavilions

Select residences extend to a private pavilion framed by expansive city views. Inspired by Japanese tea-house design, it is an adaptable area that each homeowner can personalise, transforming it into a lounge, a meditation space, or a recording studio.



THE CAVE

# Where Every Sense Is Renewed





Designed to mirror the serenity of nature's hidden coves and springs, The Cave unfolds into a sanctuary of restoration and wellness.



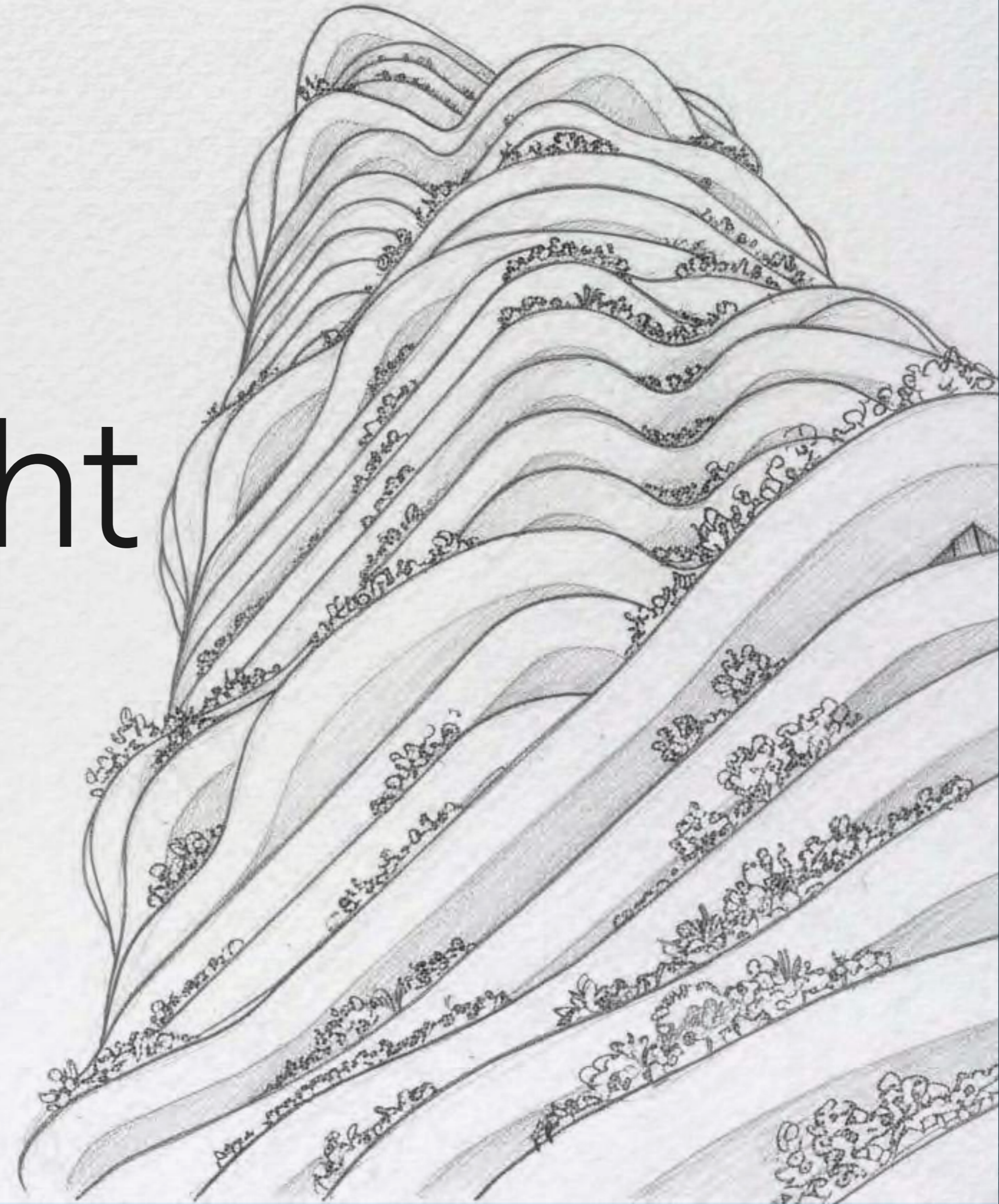
# Retreat Into Holistic Well-being

Wellness flows through every detail. From the indoor lagoon to the hydrotherapy spa, and warm salt room, each space invites deep restoration. From holistic treatment rooms to an invigorating ice bath, and a relaxing lounge and refreshments deck, this is where balance, ritual, and renewal come together.



THE MOUNTAIN

# Where Leisure Reaches Its Height





The peak of experience,  
where ambition and  
peace of mind coexist  
above the city.



# Reserved For Those Who Seek The Extraordinary

The Mountain embodies the pinnacle of refined leisure and professional life. Designed for both focus and connection, it offers spaces that inspire collaboration, reflection, and meaningful gatherings.

Every corner invites moments of pause and engagement, with views of the city skyline framing your place within Dubai's dynamic landscape.





# Exclusive Amenities

Elevated and thoughtfully designed, this is a space for those who push boundaries. Productivity meets privacy across private offices, and boardrooms, while areas for leisure invite moments of relaxation and connection. Unwind in the cigar lounge, gather in the majlis or private dining spaces, all set against inspiring city views that make every moment purposeful and exceptional.



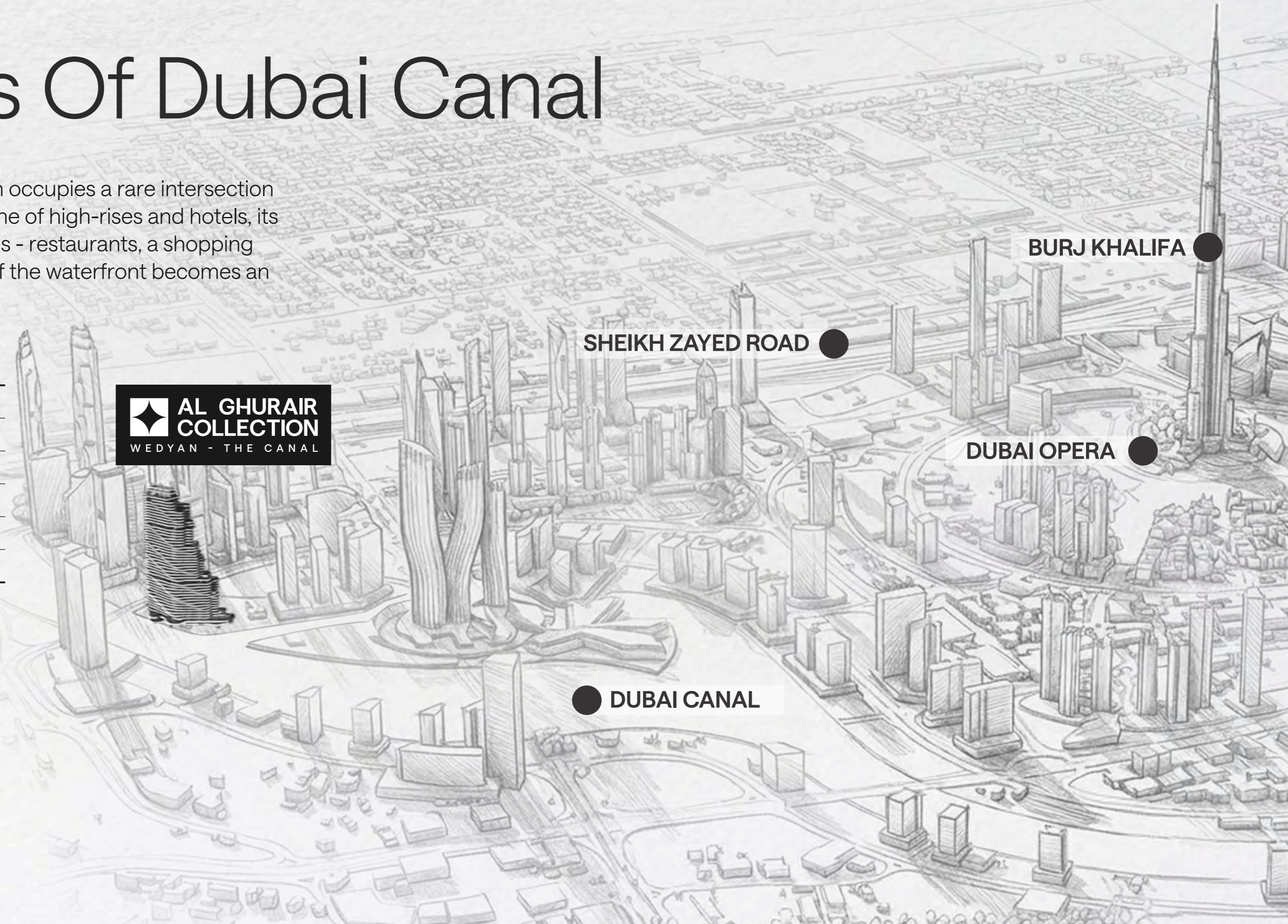
THE MOUNTAIN



# On The Banks Of Dubai Canal

Perched along the edge of the Dubai Canal, Wedyan occupies a rare intersection of city energy and waterfront calm. Beyond the skyline of high-rises and hotels, its location connects residents to a world of experiences - restaurants, a shopping center, cycle paths, and more - where the serenity of the waterfront becomes an extension of your home.

Key Landmarks	Travel Time
The Dubai Mall / Burj Khalifa	8 minutes
Dubai International Airport	17 minutes
Palm Jumeirah	26 minutes
Dubai Marina / JBR	27 minutes
Mall of the Emirates	30 minutes
Al Maktoum International Airport	41 minutes



SHEIKH ZAYED ROAD ●

BURJ KHALIFA ●

DUBAI OPERA ●

● DUBAI CANAL

Your Masterpiece,  
Perfected.

 **AL GHURAIR  
COLLECTION**  
WEDYAN - THE CANAL