



PROJECT SUMMARY

Verdana is in *Dubai Investments Park (DIP)*, which offers contemporary high-end residential community, delivering the whole luxury lifestyle with close proximity to most of Dubai's attractions, and is surrounded by parks, schools, mosques, and community retails. The DIP community is intended to be one of the region's most environmentally friendly developments.

Extensive landscaping and environmentally friendly policies emphasize the company's commitment to a green, clean environment.

Verdana has a mix of units, it contains **280** Townhouses and **363** Apartments; with Amenities that are easily accessible.

In terms of design, quality, and space, they have all been built to the highest international standards.

UNIT FEATURES

- Private Balconies / Terraces as per unit plan
- Kitchen cabinets and countertops
- Fully tiled bathrooms,
- Vanity units & Mirrors
- Air conditioning
- Built-in wardrobes in bedrooms
- Some bedrooms with private bathroom
- Laundry & Maid Room in some townhouses
- Double Height Living room in some townhouses
- Sky roof in some townhouses



PROJECT DETAILS

Type : Townhouses & Apartments

Plot Area : **54,870.52** sq.m

Total Units : **280** Townhouses **363** Apartments





AMENITIES & SERVICES

- Private Parkings for each unit
- Large Swimming Pool
- Kids' Swimming Pool
- Gymnasium
- Clubhouse
- Shaded Seating Areas
- Landscape Areas
- Large Elevators
- Kids Play Area
- BBQ Stations

LOCATION FEATURES

Centred location in Dubai

- 18** minutes driving to Dubai Marina
- 18** minutes driving to Dubai Park and Resorts
- 20** minutes driving to Palm Jumeirah
- 21** minutes driving to Global Village
- 21** minutes driving to Al Barsha Mall
- 23** minutes driving to Mall of The Emirates
- 24** minutes driving to IMG World
- 26** minutes driving to Burj Khalifa/Dubai Mall





VERDANA



UNIT MIX

Verdana *Townhouses:*

Two Bedroom : 110 Townhouses
Three Bedroom : 32 Townhouses
Four Bedroom : 138 Townhouses
Total No. of Units : **280** units

Verdana *Residence:*

Studio : 110 Apartments
One Bedroom : 110 Apartments
Two Bedroom : 98 Apartments
Three Bedroom : 15 Apartments
Four Bedroom : 30 Apartments
Total No. of Units : **363** units

UNIT TYPES

TOWNHOUSES



UNIT TYPES

TOWNHOUSES



UNIT TYPES

TOWNHOUSES



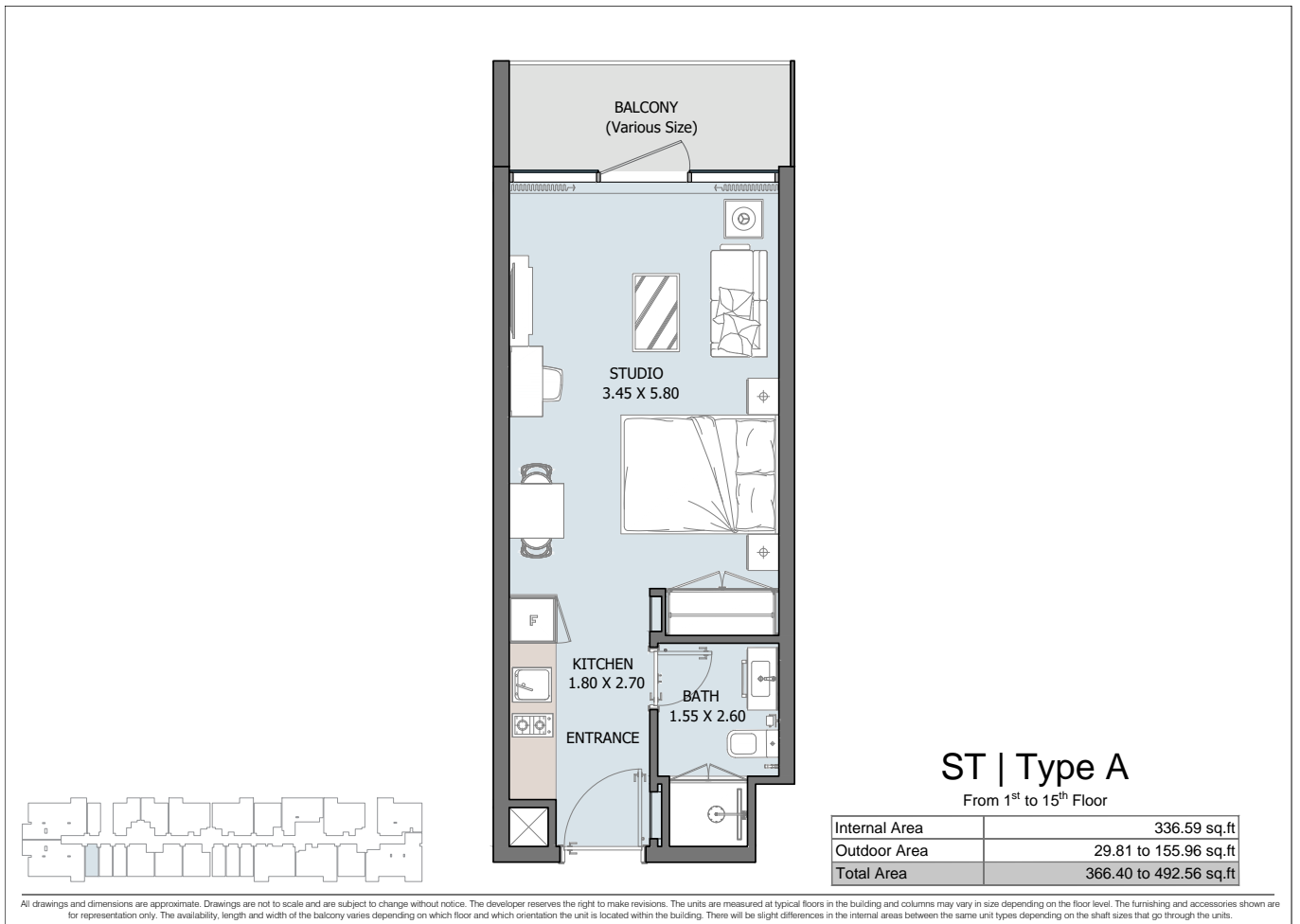
UNIT TYPES

TOWNHOUSES



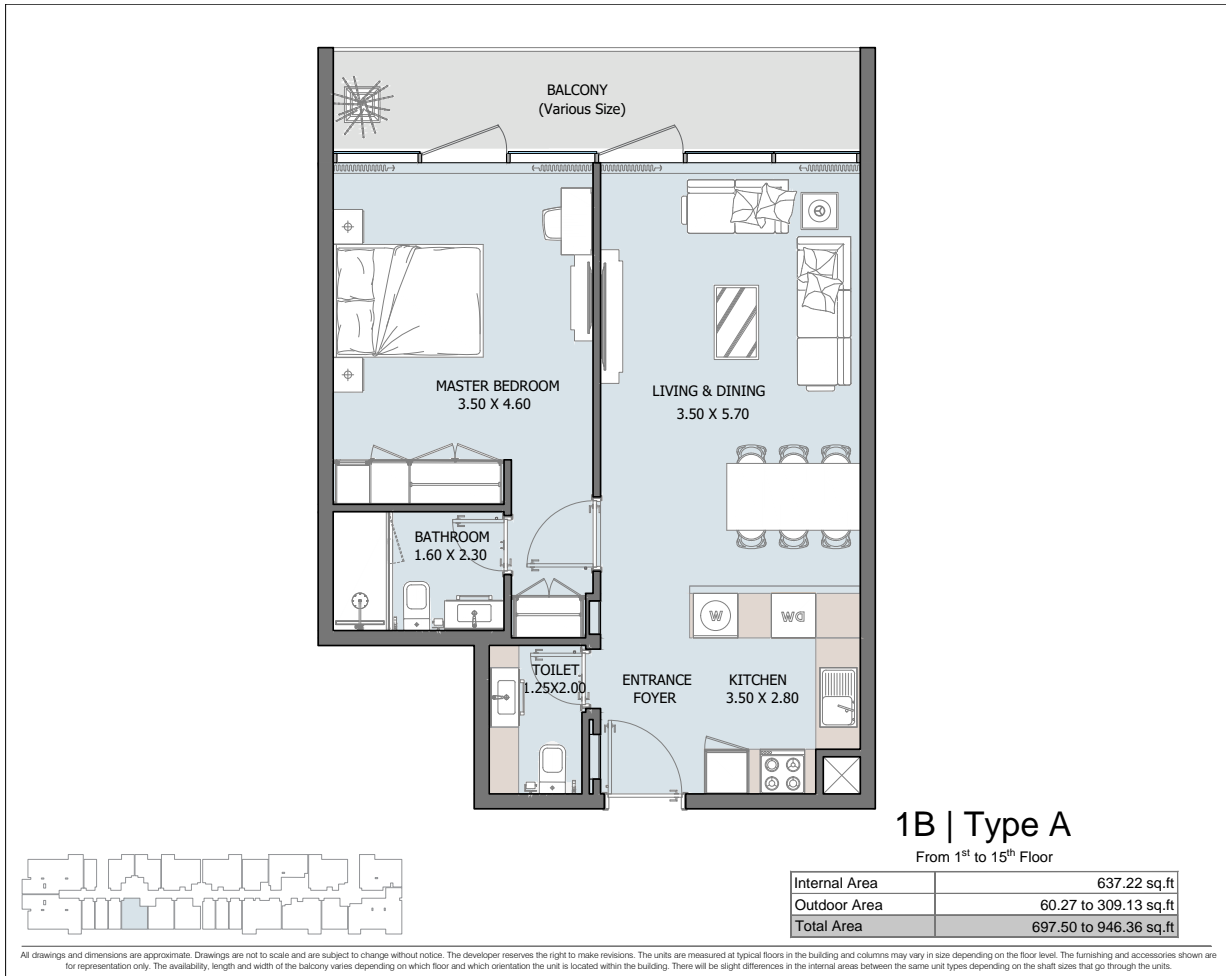
UNIT TYPES

RESIDENCE



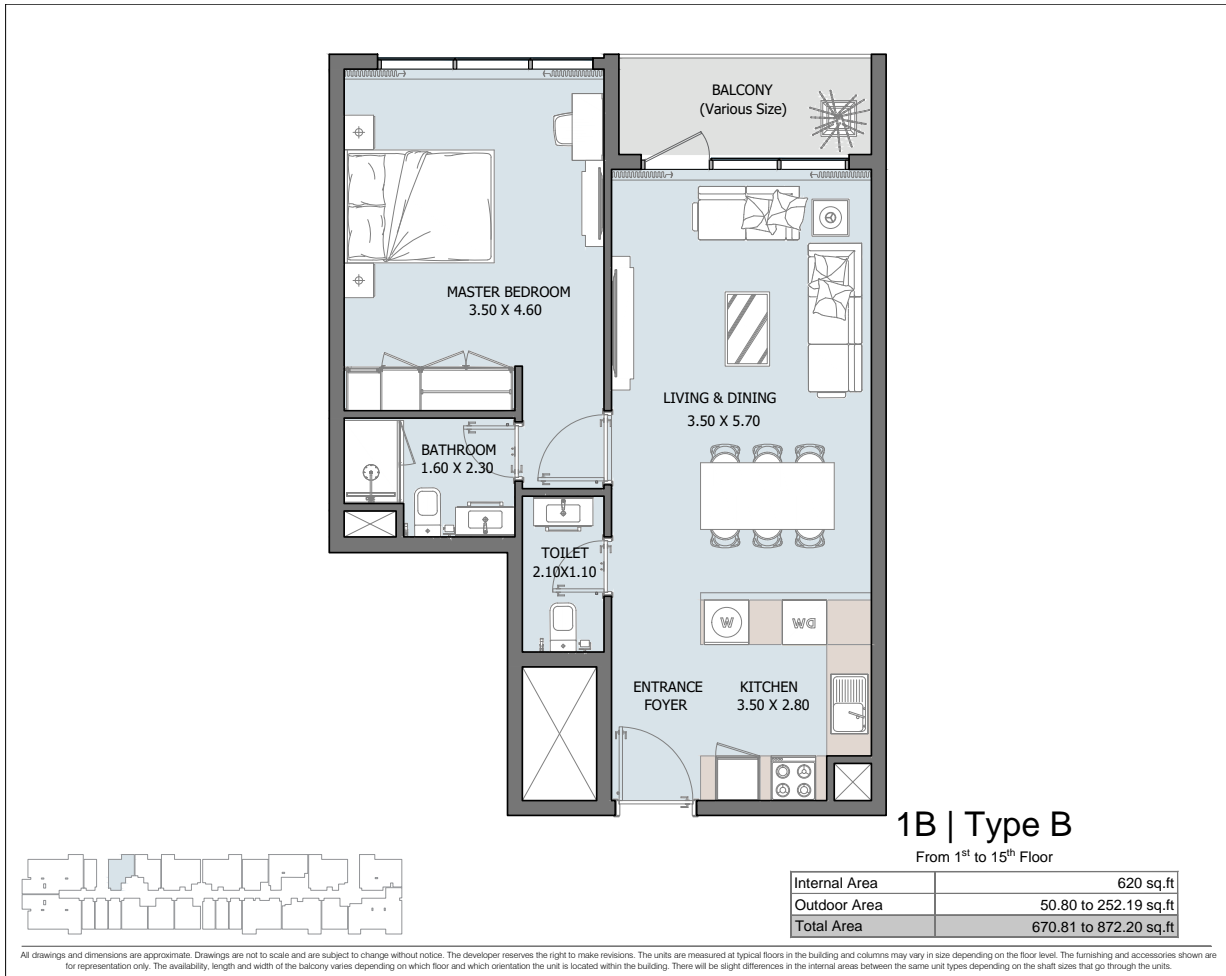
UNIT TYPES

RESIDENCE



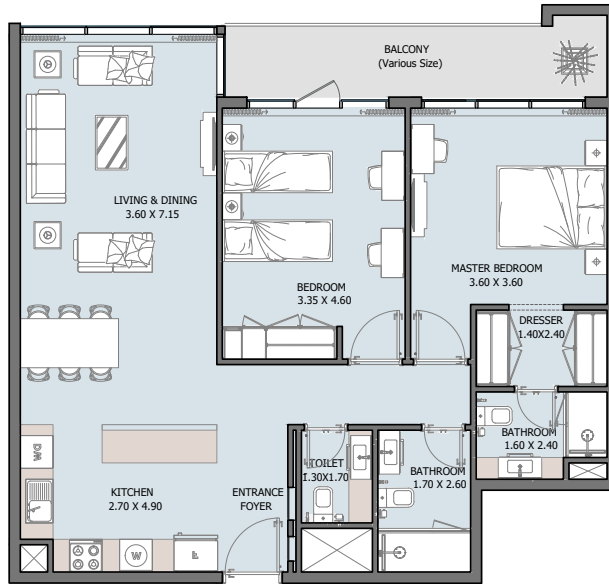
UNIT TYPES

RESIDENCE



UNIT TYPES

RESIDENCE



2B | Type A

From 1st to 15th Floor

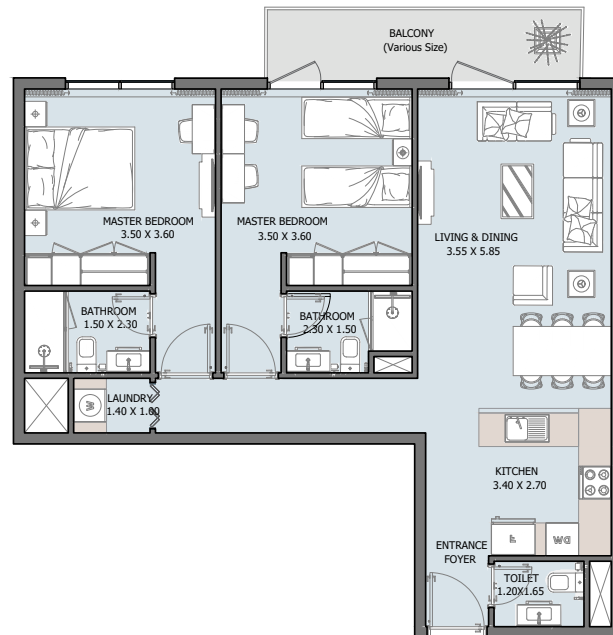


Internal Area	1025.15 sq.ft
Outdoor Area	68.99 to 402.03 sq.ft
Total Area	1094.15 to 1427.19 sq.ft

All drawings and dimensions are approximate. Drawings are not to scale and are subject to change without notice. The developer reserves the right to make revisions. The units are measured at typical floors in the building and columns may vary in size depending on the floor level. The furnishing and accessories shown are for representation only. The availability, length and width of the balcony varies depending on which floor and which orientation the unit is located within the building. There will be slight differences in the internal areas between the same unit types depending on the shaft sizes that go through the units.

UNIT TYPES

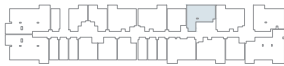
RESIDENCE



2B | Type B

From 1st to 15th Floor

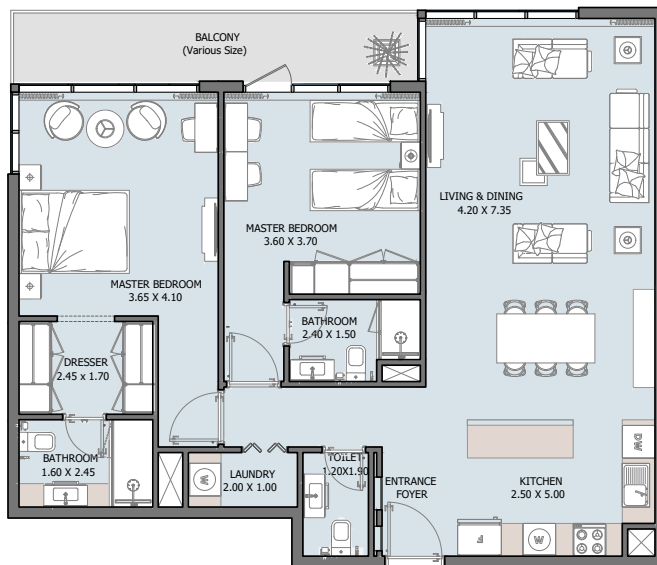
Internal Area	897.60 sq.ft
Outdoor Area	81.80 to 294.71 sq.ft
Total Area	979.41 to 1192.32 sq.ft



All drawings and dimensions are approximate. Drawings are not to scale and are subject to change without notice. The developer reserves the right to make revisions. The units are measured at typical floors in the building and columns may vary in size depending on the floor level. The furnishing and accessories shown are for representation only. The availability, length and width of the balcony varies depending on which floor and which orientation the unit is located within the building. There will be slight differences in the internal areas between the same unit types depending on the shaft sizes that go through the units.

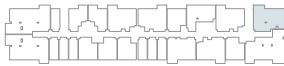
UNIT TYPES

RESIDENCE



2B | Type C

From 1st to 15th Floor

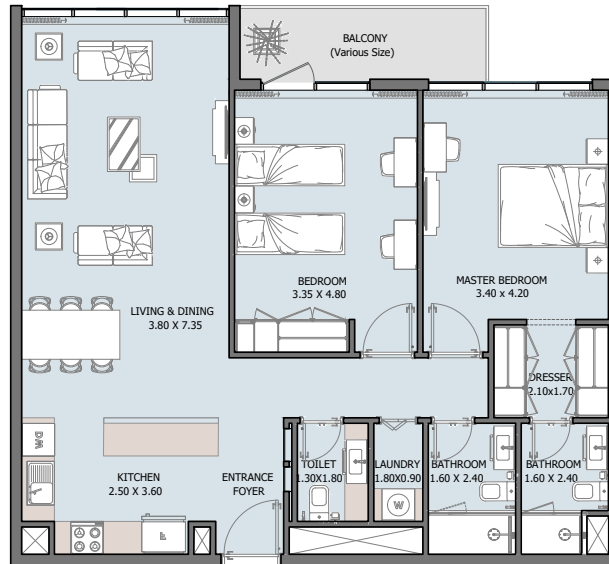


Internal Area	1132.36 sq.ft
Outdoor Area	108.93 to 433.24 sq.ft
Total Area	1241.29 to 1565.61 sq.ft

All drawings and dimensions are approximate. Drawings are not to scale and are subject to change without notice. The developer reserves the right to make revisions. The units are measured at typical floors in the building and columns may vary in size depending on the floor level. The furnishing and accessories shown are for representation only. The availability, length and width of the balcony varies depending on which floor and which orientation the unit is located within the building. There will be slight differences in the internal areas between the same unit types depending on the shaft sizes that go through the units.

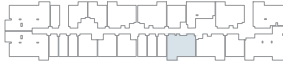
UNIT TYPES

RESIDENCE



2B | Type D

From 1st to 10th Floor

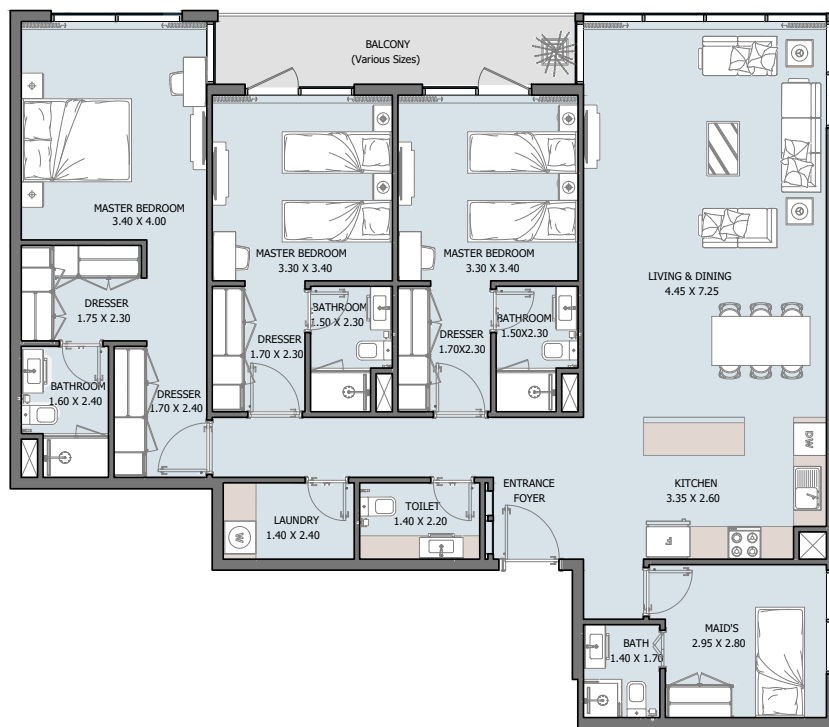


Internal Area	1066.59 sq.ft
Outdoor Area	66.06 to 318.61 sq.ft
Total Area	1132.69 to 1385.21 sq.ft

All drawings and dimensions are approximate. Drawings are not to scale and are subject to change without notice. The developer reserves the right to make revisions. The units are measured at typical floors in the building and columns may vary in size depending on the floor level. The furnishing and accessories shown are for representation only. The availability, length and width of the balcony varies depending on which floor and which orientation the unit is located within the building. There will be slight differences in the internal areas between the same unit types depending on the shaft sizes that go through the units.

UNIT TYPES

RESIDENCE



3B | Type A

From 1st to 15th Floor

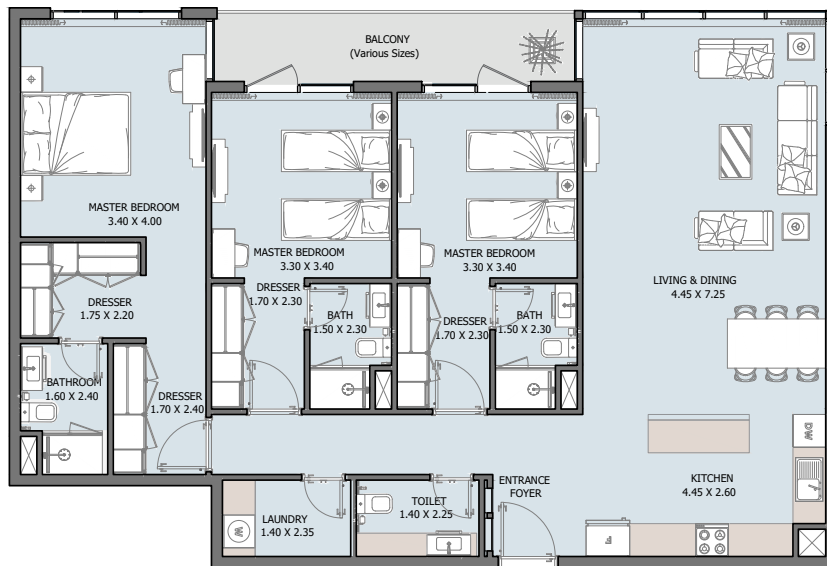


Internal Area	1621.80 sq.ft
Outdoor Area	95.79 to 400.30 sq.ft
Total Area	1717.60 to 2022.11 sq.ft

All drawings and dimensions are approximate. Drawings are not to scale and are subject to change without notice. The developer reserves the right to make revisions. The units are measured at typical floors in the building and columns may vary in size depending on the floor level. The furnishing and accessories shown are for representation only. The availability, length and width of the balcony varies depending on which floor and which orientation the unit is located within the building. There will be slight differences in the internal areas between the same unit types depending on the shaft sizes that go through the units.

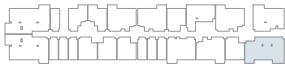
UNIT TYPES

RESIDENCE



3B | Type B
9th Floor

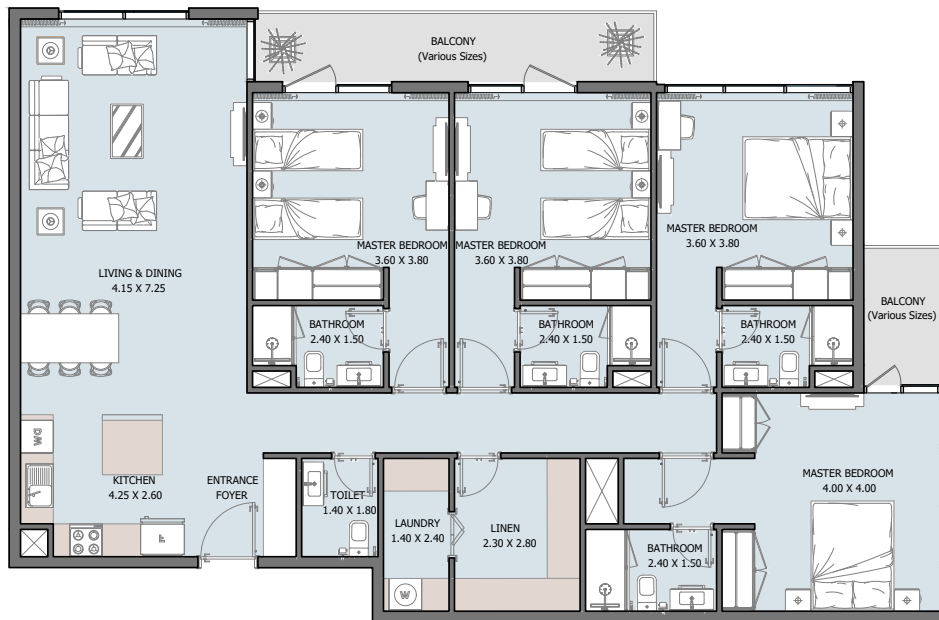
Internal Area	1473.15 sq.ft
Outdoor Area	95.79 sq.ft
Total Area	1568.95 sq.ft



All drawings and dimensions are approximate. Drawings are not to scale and are subject to change without notice. The developer reserves the right to make revisions. The units are measured at typical floors in the building and columns may vary in size depending on the floor level. The furnishing and accessories shown are for representation only. The availability, length and width of the balcony varies depending on which floor and which orientation the unit is located within the building. There will be slight differences in the internal areas between the same unit types depending on the shaft sizes that go through the units.

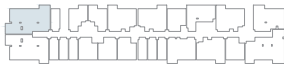
UNIT TYPES

RESIDENCE



4B | Type A

From 1st to 15th Floor

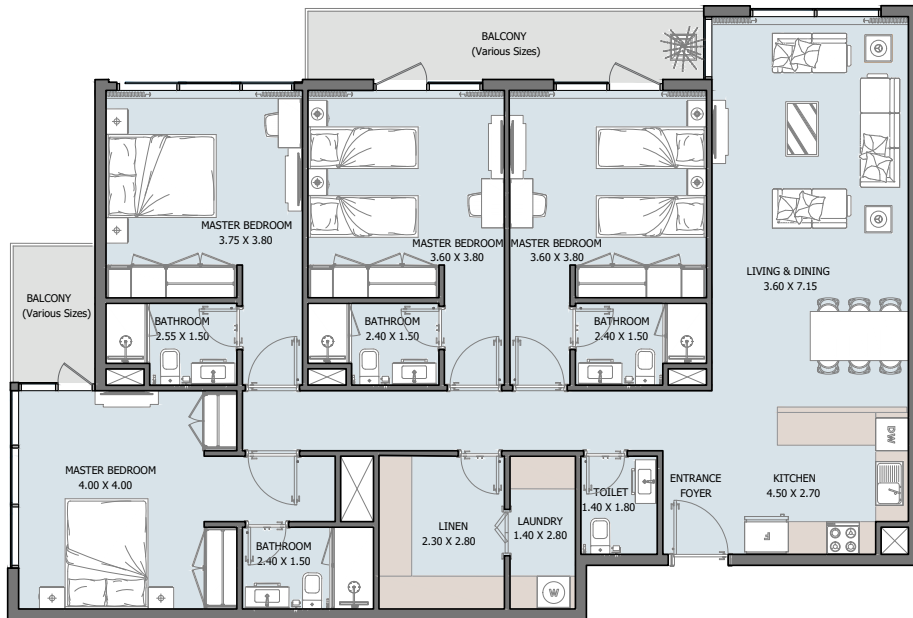


Internal Area	1679.17 sq.ft
Outdoor Area	148.43 to 1068.74 sq.ft
Total Area	1827.60 to 2747.92 sq.ft

All drawings and dimensions are approximate. Drawings are not to scale and are subject to change without notice. The developer reserves the right to make revisions. The units are measured at typical floors in the building and columns may vary in size depending on the floor level. The furnishing and accessories shown are for representation only. The availability, length and width of the balcony varies depending on which floor and which orientation the unit is located within the building. There will be slight differences in the internal areas between the same unit types depending on the shaft sizes that go through the units.

UNIT TYPES

RESIDENCE



4B | Type B

From 1st to 15th Floor

Internal Area	1618.35 sq.ft
Outdoor Area	150.47 to 580.71 sq.ft
Total Area	1768.83 to 2199.06 sq.ft



All drawings and dimensions are approximate. Drawings are not to scale and are subject to change without notice. The developer reserves the right to make revisions. The units are measured at typical floors in the building and columns may vary in size depending on the floor level. The furnishing and accessories shown are for representation only. The availability, length and width of the balcony varies depending on which floor and which orientation the unit is located within the building. There will be slight differences in the internal areas between the same unit types depending on the shaft sizes that go through the units.



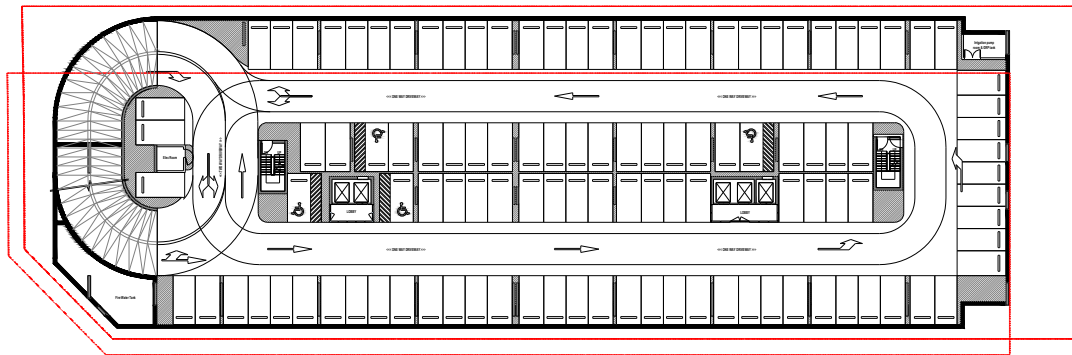
VERDANA

FLOOR PLANS

VERDANA-

BASEMENT 01

○ 31B ○ 1B ○ 2B ○ 3B ○ 4B

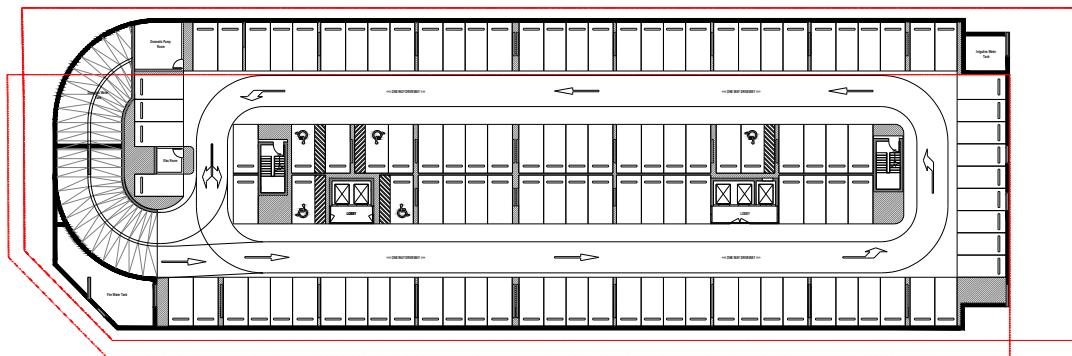


Parking No. 113

VERDANA-

BASEMENT 02

○ 31B ○ 1B ○ 2B ○ 3B ○ 4B



Parking No. 118





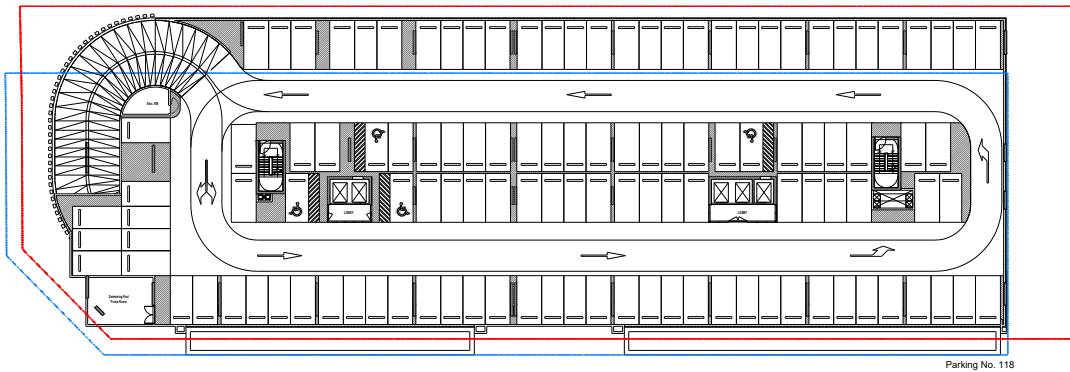
VERDANA

FLOOR PLANS

VERDANA-

PODIUM 01

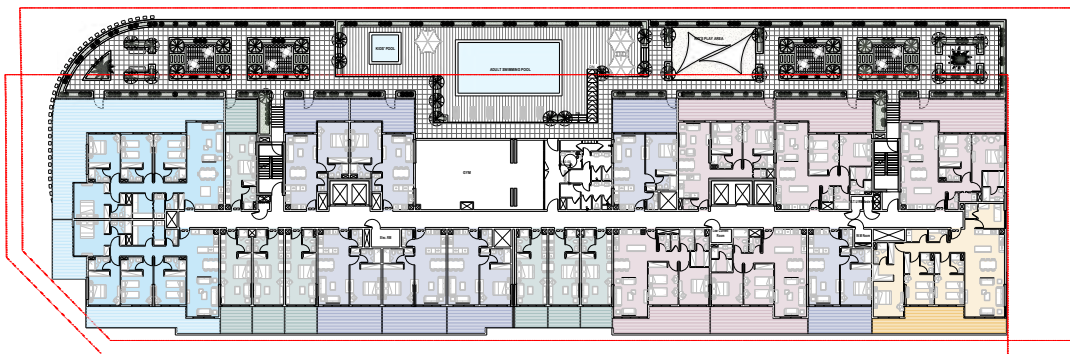
○ 11B ○ 1B ○ 2B ○ 3B ○ 4B



VERDANA-

FIRST FLOOR

○ 11B ○ 1B ○ 2B ○ 3B ○ 4B





VERDANA

FLOOR PLANS

VERDANA-

SECOND FLOOR

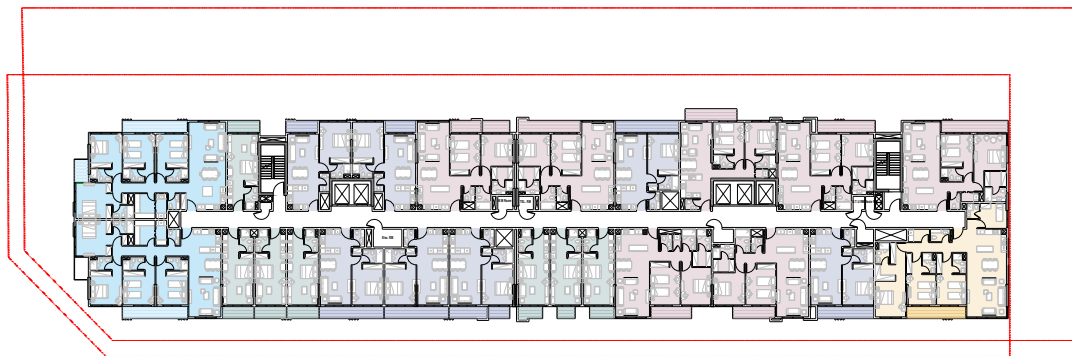
○ 31B ○ 1B ○ 2B ○ 3B ○ 4B



VERDANA-

TYPICAL 3RD TO 10TH

○ 31B ○ 1B ○ 2B ○ 3B ○ 4B





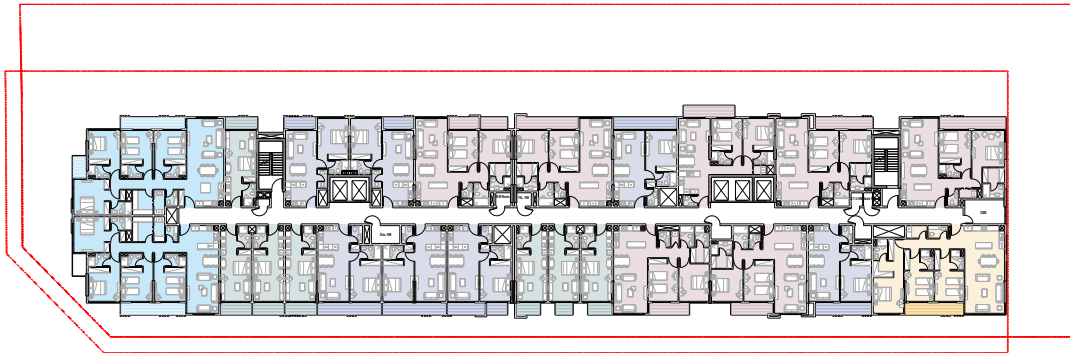
VERDANA

FLOOR PLANS

VERDANA-

9THFLOOR

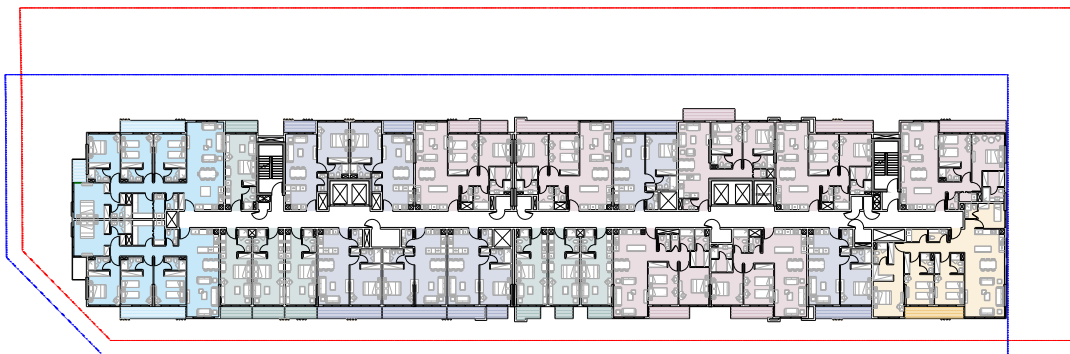
○ 31B ○ 1B ○ 2B ○ 3B ○ 4B



VERDANA-

TYPICAL 11TH TO 15TH

○ 31B ○ 1B ○ 2B ○ 3B ○ 4B





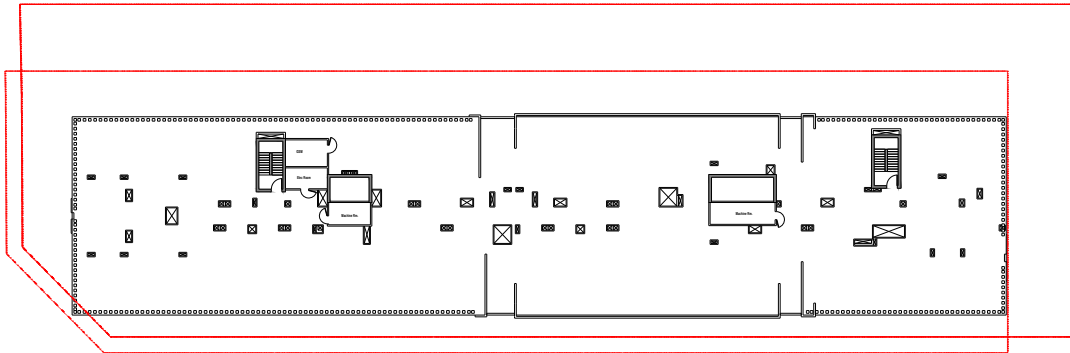
VERDANA

FLOOR PLANS

VERDANA-

ROOF FLOOR

○ 1B ○ 1B ○ 2B ○ 3B ○ 4B





TANAMI
P R O P E R T I E S

CONTACT US

 +971 4 248 3400 |  +971 55 162 3236

Email Us

info@tanamiproperties.ae

For More Info...

www.tanamiproperties.com/Projects/Verdana-Phase-6



ADDRESS

Office 3405, Marina Plaza,
Al Marsa Street, Dubai Marina, UAE