



NANMA LOTUS





**TYPICAL FLOOR ( 01,03 & 05 ) PLAN**



**TYPE 01**  
**AREA:328.41 Sq. Ft.**



Key Plan



**TYPE 02**  
**AREA:304.62 Sq. Ft.**



Key Plan



**TYPE 03**  
**AREA:1131.29 Sq. Ft.**



Key Plan



**TYPE 04**  
**AREA:1085 Sq. Ft.**



Key Plan



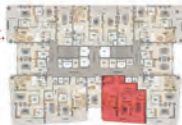
TYPE 05  
AREA:314.95 Sq. Ft.



Key Plan



TYPE 06  
AREA:1079.51 Sq. Ft.



Key Plan



**TYPE 07**  
**AREA:1131.61 Sq. Ft.**



Key Plan



**TYPE 08**  
**AREA:304.62 Sq. Ft.**



Key Plan



**TYPE 09**  
**AREA:332.60 Sq. Ft.**



Key Plan



**TYPE 10**  
**AREA:1114.06 Sq. Ft.**



Key Plan



**TYPE 11**  
**AREA:416.13 Sq. Ft.**



Key Plan



**TYPE 12**  
**AREA:1108.14 Sq. Ft.**



Key Plan



**TYPE 13**  
**AREA:416.13 Sq. Ft.**



Key Plan



**TYPE 14**  
**AREA:1114.28 Sq. Ft.**



Key Plan



**TYPICAL FLOOR ( 02 & 04 ) PLAN**



**TYPE 04 ( 2 & 4th Floor )**  
**AREA:985.11 Sq. Ft.**



Key Plan



**TYPE 06 ( 2 & 4th Floor )**  
**AREA:979.62 Sq. Ft.**



Key Plan



SIXTH FLOOR PLAN



**TYPE 01 ( Sixth Floor )**  
**AREA:1458.51 Sq. Ft.**



Key Plan



**TYPE 02 ( Sixth Floor )**  
**AREA:304.62 Sq. Ft.**



Key Plan



**TYPE 03 ( Sixth Floor )**  
**AREA:1131.29 Sq. Ft.**

**TYPE 04 ( Sixth Floor )**  
**AREA:985.11 Sq. Ft.**



Key Plan



Key Plan



**TYPE 05 ( Sixth Floor )**  
**AREA:314.95 Sq. Ft.**



Key Plan



**TYPE 06 ( Sixth Floor )**  
**AREA:979.62 Sq. Ft.**



Key Plan



**TYPE 07 ( Sixth Floor )**  
**AREA:1131.29 Sq. Ft.**



Key Plan



**TYPE 08 ( Sixth Floor )**  
**AREA:304.62 Sq. Ft.**



Key Plan



**TYPE 09 ( Sixth Floor )**  
**AREA:1462.71 Sq. Ft.**



**Key Plan**